

BEDEUTUNG DER FARBNUMMERN

- / Schrägstriche zwischen zwei Farbnummern: die Farben sind gemischt.
- Bindestrich zwischen zwei Farbnummern: von einer Farbe in die andere Farbe übergehend.

Leichte Farbabweichungen sind möglich, bitte zusätzlich BELLE MADAME FARBRING verwenden.

MEANING OF COLOUR NUMBERS

- / Diagonal mark between two colour numbers: colours are mixed.
- Hyphen between two colour numbers: gradual transition from one colour to the other.

Slight deviations of colour might occur. In addition please use BELLE MADAME COLOUR RING.

SIGNIFICATION DES CODES

COULEURS

- / Barre oblique entre deux numéros de couleur: Les couleurs sont mélangées.
- Trait d'union entre deux numéros de couleur: passage d'une couleur à l'autre.

De légères variations de couleur sont possibles. Prière d'utiliser en addition le MÉCHIER BELLE MADAME.

SIGNIFICADO DE CODIGO

DE COLORES

- / La diagonal entre dos números de colores: los colores están mezclados.

- El guión entre dos números de colores: transición gradual de un color a otro.

Son posibles ligeras variaciones cromáticas. Utilizar adicionalmente por favor, el ANILLO DE COLORES BELLE MADAME.

SIGNIFICATO DEI CODICI COLORI

- / Barre oblique tra due codici colori: i colori sono mescolati.

- Trattino tra due codici colori: da un colore all'altro.

Sono possibili lievi variazioni di colore. Utilizzare anche il CAMPIONARIO COLORI DI BELLE MADAME.

CLASSIC COLOURS

BROWN COLOURS		BLOND COLOURS		RED COLOURS		GREY COLOURS																	
Grundfarben Base colours Couleurs de base Colores base Colori di base		1-B	schwarzbraun almost black presque noir marrón-negro marrone-nero		2	dunkelbraun very dark brown brun foncé marrón oscuro marrone scuro		4	mittelbraun medium brown brun moyen marrón medio marrone medio		6	hellbraun medium light brown brun clair marrón medio claro marrone chiaro											
	8	hell-hellbraun light brown brun très clair marrón claro marrone chiarissimo		10	dunkelblond dark blond blond foncé rubio oscuro biondo scuro		10/12	dunkel-ashblond dark ash-blond blond cendré foncé rubio cenizo oscuro biondo cenere scuro		12	mittel-ashblond medium blond blond moyen rubio cenizo medio biondo cenere medio		14	mittelblond medium light blond blond moyen clair rubio claro medio biondo medio		16	ashblond ash blond blond cendré clair rubio cenizo biondo cenere		20	goldblond gold blond blond doré rubio dorado biondo d'orato		20-R	warm hell-gold-blond warm light gold blond couleur chaude, blond doré clair rubio dorado, claro cálido biondo chiaro d'orato
	22	hellblond light blond blond clair rubio claro biondo chiaro		22-H	hell hell-blond light light blond blond très clair rubio muy claro biondo chiarissimo		24	hell-ashblond light ash blond blond cendré clair rubio cenizo claro biondo cenere chiaro		25-R	warm-hellblond warm light blond couleur chaude, blond clair rubio claro cálido biondo solare e chiaro		26	hell-hellblond (platinblond) light gold blond blond très clair rubio platinado biondo platinato									
	27	kupferblond copper blond blond cuivré rubio cobrizo biondo ramato		29	hell-kupfer gold-blond light copper gold blond cuivré clair blond doré rubio dorado, cobrizo cálido rame chiaro / biondo d'orato		30	rotbraun golden red brun rouge marrón-rojo rosso-marrone		32-B	rot (zyklam) flame red rouge rojo fuego rosso (ciclaminio)		33	kastanie dark auburn marron castaño castano									
	130	hell-rot (hell-zyklam) light flame red rouge clair rojo fuego claro rosso chiaro		133	bordeaux bordeaux bordeaux burdeos bordeaux		135	kupferrot copper red rouge cuivré rojo cobrizo rosso rame															
	36	dunkelblond mit 15 % grau dark blond with 15 % grey blond foncé avec 15 % gris rubio oscuro con 15 % gris biondo scuro con 15 % grigio		37	dunkelbraun mit 10 % grau dark brown with 10 % grey brun foncé avec 10 % gris marrón oscuro con 10 % gris marrone scuro con 10 % grigio		38	mittelbraun mit 10 % grau medium brown with 10 % grey brun moyen avec 10 % gris marrón medio con 10 % gris marrone con 10 % grigio		39	hellbraun mit 25 % grau light brown with 25 % grey brun clair avec 25 % gris marrón claro con 25 % gris marrone chiaro con 25 % grigio		43	hellbraun mit 60 % grau light brown with 60 % grey brun clair avec 60 % gris marrón claro con 60 % gris marrone chiaro con 60 % grigio									
	44	hellbraun mit 40 % grau light brown with 40 % grey brun clair avec 40 % gris marrón claro con 40 % gris marrone chiaro con 40 % grigio		45	mittelbraun mit 45 % grau medium brown with 45 % grey brun moyen avec 45 % gris marrón medio con 45 % gris marrone medio con 45 % grigio		51	silbergrau mit 20 % dunkelbraun silver grey with 20 % dark brown gris argenté avec 20 % brun foncé gris plateado con 20 % marrón oscuro grigio argentato con 20 % marrone scuro		53	silbergrau mit 25 % braun silver grey with 25 % brown gris argenté avec 25 % brun gris plateado con 25 % marrón grigio argentato con 25 % marrone		56	weißgrau mit 5 % hellbraun white grey with 5 % light brown gris blanc avec 5 % brun clair gris blanco con 5 % marrón oscuro bianco grigio con 5 % marrone chiaro									
	60	weiß white blanc blanco bianco		60-W	arktis-weiß arctic white blanc arctique blanco ártico bianco artico		101	blond-weiß white blond blond blanc rubio-blanco biondo-bianco															

TREND COLOURS

BROWN COLOURS

Aktuelle Mixfarben
Up-to-date mix-colours
Couleurs mélangées actuelles
Mezcla de colores actuales
Attuali colori misti

Espresso-Copper/Mist (1B/30) Espresso-Mix (2/4) Dark-Mocca (4/6-4)

Mocca-Brown (6/8/27R) Dark-Chocolate (8/12-8) Mocca (6/10/30) Cold-Chocolate (5/8/14)

Chocolate (8/12/30) Chocolate-Mix (8/10/27/20) or (8/27-4) Light-Brown/Copper-Mix (8/29-8) Dark-Copper-Mix (8/29A)

BLOND COLOURS

12/26-12 Honey-Toast (14/20/25R-12) Honey-Mix (14/20/25R) Vanilla-Mix (14/25R-12)

Irish-Gold-Blond (27/20R) Butter-Toast (20/14/22-14) 20/22H/26 Danish-Blond (20R/22H) or 22H/20R

Swedish-Blond-Gold (22H/25R-20/22) Swedish-Mix (23A/26) Swedish-Blond (22H/22) Swedish-Blond-New (22H/23)

RED COLOURS

Black/Violett (2V-Violett) Cherry-Coke (2/4/133) Dark-Purple (2V/133) Dark-Purple/Flame (2V/133/135)

Dark-Cherry (4/133/32B) Terracotta-Gold (8/27R-8) Dark-Red-Mix (30/6/27-6) Ruby-Mix (33/32B/135/29)

Rusty-Red (31/33) Red-Power-Mix (135/130/4) Dark-Flame (135/32B/6) Paprika-Mix (32B/30/29) or (29/32B/30) or (29/32B/33)

Flame-Mix (133/134) Fire-Mix (130/133/135 +Front-Orange-Flame)

GREY COLOURS

Blueberry-Grey Pepper-Mix (44/51) Salt & Pepper (44/51/60) 44/101

45-36-39 56/53-39 60-56-51 Silver-Stone (60S/51)

60/51 60/101 101/14-14

ROOT COLOURS

Farben mit dunklerem Ansatz
Colours with darker root
Couleurs avec racine plus foncée
Colores con raíz oscura
Colori con la ricrescita scura

BROWN

Chocolate-Root (8/12/27+Root6) Dark-Copper-Root (8/30/27+Root4)

Chocolate-Mix-Root (8/10/14+Root4)

BLOND COLOURS

Chocolate/Cream-Root (10/27/20R+Root10) Caramel-Root (20/27/22H+Root8) Vanilla-Root (14/26+Root14)

Honey-Mix-Root (14/25R+Root12) Vanilla-Mix-Root (14/20/25R+Root10) Cognac-Root (20/25R/14+Root12)

Chardonnay-Root (20R/27+Root12) Sandy-Blond-Root (20/25R-14+Root14) Prosecco-Root (22H/14+Root10)

Prosecco-Mix-Root (22H/25R/14+Root12) Honey-Toast-Root (20R/27+Root4) Danish-Blond-Root (20R/22H+Root14)

Champagne-Ash-Root (22H/22/20+Root10) Champagne-Root (22H/22+Root12) Champagne-Mix-Root (22H/20R+Root8) or (23A/26+Root12)

Nordic-Ash-Blond (22/24R-16+Root14) Swedish-Blond-Mix (25R/22H-20+Root16) Swedish-Blond-Root (25R/22H+Root16)

Terracotta-Mix-Root (30/27+Root14) Cherry-Root (33/130+Root4) Terracotta-Gold-Root (30/29+Root6)

RED COLOURS

Terracotta-Root (33/130+Root2)

Belle Madame®
HAIR COLLECTION

GREY COLOURS

Dark-Grey-Root (53-51-44+Root4) or (38/53+Root6)

Blond-Grey-Root (17/101+Root18) Ice-Blond-Root (101/22H+Root10)

PASTEL

Snow-Blond-Root (101/16/60+Root10)

Pastel-White + Black-Blue-Root

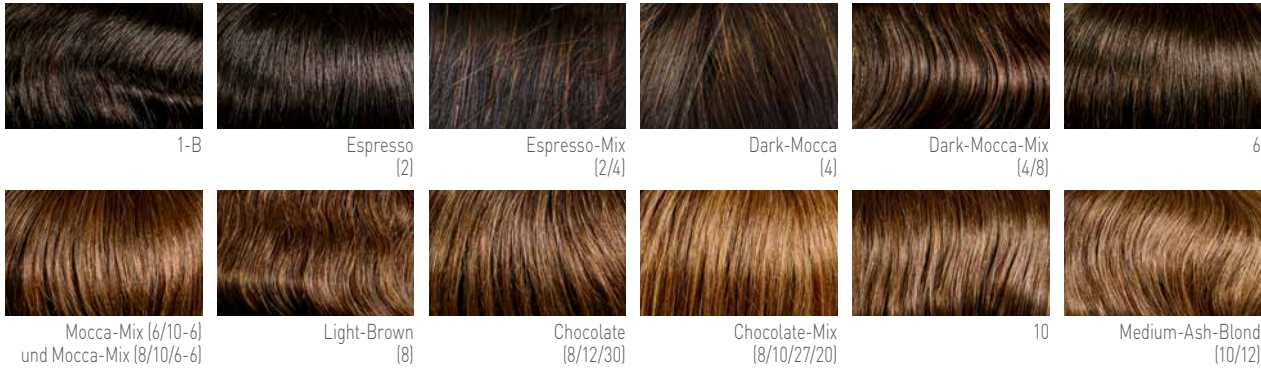
OMBRE COLOURS

Dark-Brown /Copper-Ombre (6-27R) Dark-Brown /Fire-Ombre (4-27R/29)

FARBÜBERSICHT ECHTHAAR

COLOUR CHART HUMAN HAIR

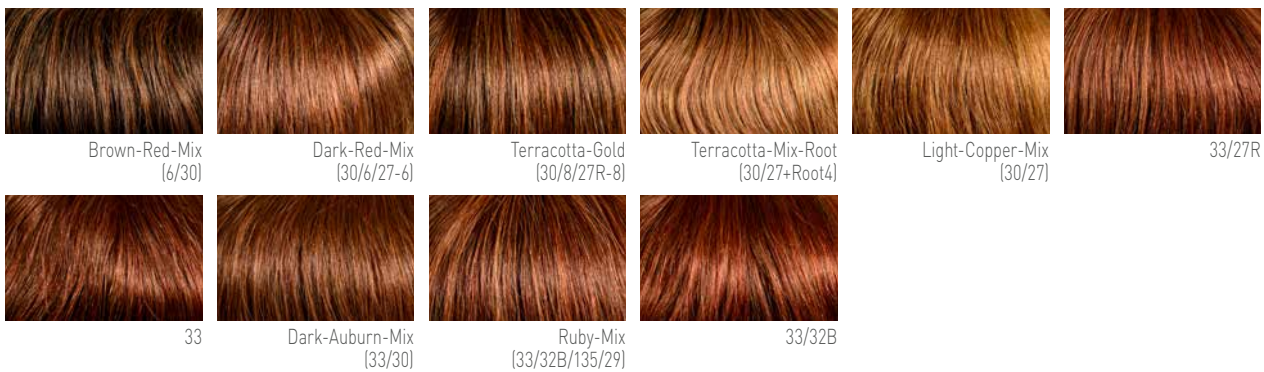
BROWN COLOURS



BLOND COLOURS



RED COLOURS



GREY COLOURS



OMBRE COLOURS



*Weißanteil aus Synthetik.
White hair made of synthetic fibre.

**Enthält 5% hitzbeständiges Synthetikhaar.
Contains 5% heat-resistant synthetic hair.

BEDEUTUNG DER FARB-NUMMERN

/ Schrägstriche zwischen zwei Farbnummern: die Farben sind gemischt.

- Bindestrich zwischen zwei Farbnummern: von einer Farbe in die andere Farbe übergehend.

Leichte Farbabweichungen sind möglich, bitte zusätzlich BELLE MADAME FARBRING verwenden.

MEANING OF COLOUR NUMBERS

/ Diagonal mark between two colour numbers: colours are mixed.

- Hyphen between two colour numbers: gradual transition from one colour to the other.

Slight deviations of colour might occur. In addition please use BELLE MADAME COLOUR RING.

SIGNIFICATO DEI CODICI COLORI

/ Barre oblique tra due codici colori: i colori sono mescolati.

- Trattino tra due codici colori: da un colore all'altro.

Sono possibili lievi variazioni di colore. Utilizzare anche il CAMPIONARIO COLORI DI BELLE MADAME.

FARBÜBERSICHT COLOUR CHART

EUROPÄISCHES ECHTHAAR EUROPEAN HUMAN HAIR

VENEZIA · ROMA

BROWN COLOURS



Medium-Brown (4)



Mocca (6/10/30)



Light-Brown (8)



Chocolate (8/12/30)

BLOND COLOURS



German-Blond (11/12/15)



Honey-Mix (15/20R/25)



Scandinavian-Blond (20R/25)



Swedish-Blond (23A/26)

RED COLOURS



Russian-Red (33/30)

FERRARA

BROWN COLOURS



Medium-Brown (4/6)



Light-Brown (8/10)



Medium-Blond-Mix (11/15/27)



Ash-Blond-Root (14/16/25+Root10)



Gold-Blond-Mix (19/23A)



Light-Blond (23A/25R)

RED COLOURS



Irish-Blond-Root (27R/28+Root27R)



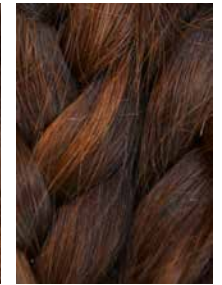
Red-Mix (33/30/27R)

RAPUNZEL

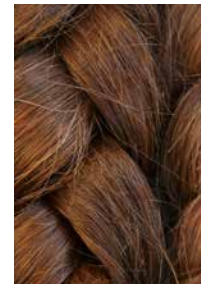
BROWN COLOURS



Medium-Brown (4/6)



Medium-Brown-Mix (6/8/30)

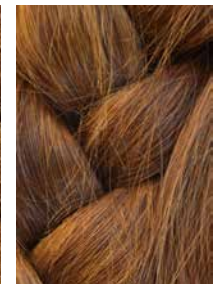


Light-Brown-Mix (8/10/30)

BLOND COLOURS



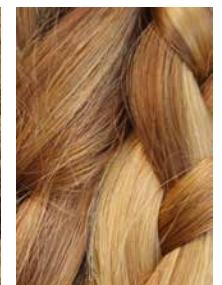
Dark-Blond (10/12)



Medium-Blond (11/12/15)



Medium-Blond-Mix (11/12/15/20)



Blond-Mix (15/20R/25)



Light-Blond-Mix (19/20R/25)



Light-Light-Blond (23A/25R/26)

FARBÜBERSICHT COLOUR CHART

Belle Madame®
PLATINUM HAIR LINE

BROWN COLOURS



Espresso-Mix
(2/4)



Dark-Mocca-Mix
(4/8)



Mocca-Mix
(6/10-6)



Chocolate-Mix
(8/10/27/20)

BLOND COLOURS



Caramel-Root
(12/27/22H+Root10)



Honey-Mix
(12A/25R/28)



Light-Blond-Mix
(15/20/23)



Champagne-Root
(20R/23+Root10)



Swedish-Blond-Mix
(25R/22H-20+Root16)

RED COLOURS



Light-Copper-Mix
(30/27)

Belle Madame®

EXTENSIONS

